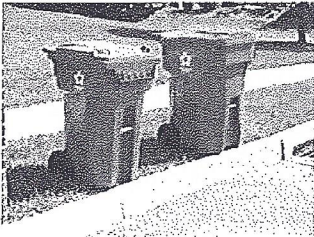


WASTE CONNECTIONS INC.
Connect with the Future[®]

YOUR SERVICE IS CHANGING

In partnership with the City of Howe, Waste Connections, Inc. will now provide residential and commercial hand pick up locations with a 95 gallon cart. Effective June 18th, 2013, all residential and commercial hand pick up customers will be collected on Tuesday only. The container should be placed on the edge of your driveway, road, or curb by 7:00 a.m. each Tuesday. All waste must fit inside your provided container, and the lid must close completely. Waste Connections recommends placing items into bags before placing them into your cart to keep your container clean. The serial number and grab bar on the front of the container should be placed facing the road and should be free of any obstacles such as gas meters, fences, vehicles, and electrical boxes. On non-collection days, your container should be placed in safe area to avoid damages such as inside a garage, or behind/beside your home or business. Each resident or business will only be provided with one 95 gallon cart, however, additional carts may be provided for an extra charge. For more information or to order additional carts, please contact The City of Howe at (903) 532-5571. Please see the images below for proper placement of your new container.



Proper Placement



No Service
Overloaded



No Service
Too Close to Mailbox

Waste Connections will continue to provide bulk pick up to residences in the City of Howe on the 1st Saturday of each month. Items for bulk should be placed on the curb by 7 a.m. Bulky items include: mattresses, furniture, stoves, hot water heaters or similar items. No items with Freon will be accepted unless a certificate of removal from a certified HVAC technician is attached. Brush should be tied in bundles of no more than 45 lbs. and less than 4 ft. in length. We do not accept tires, batteries, chemicals, fertilizer, propane tanks, concrete, bricks, rocks or paint.